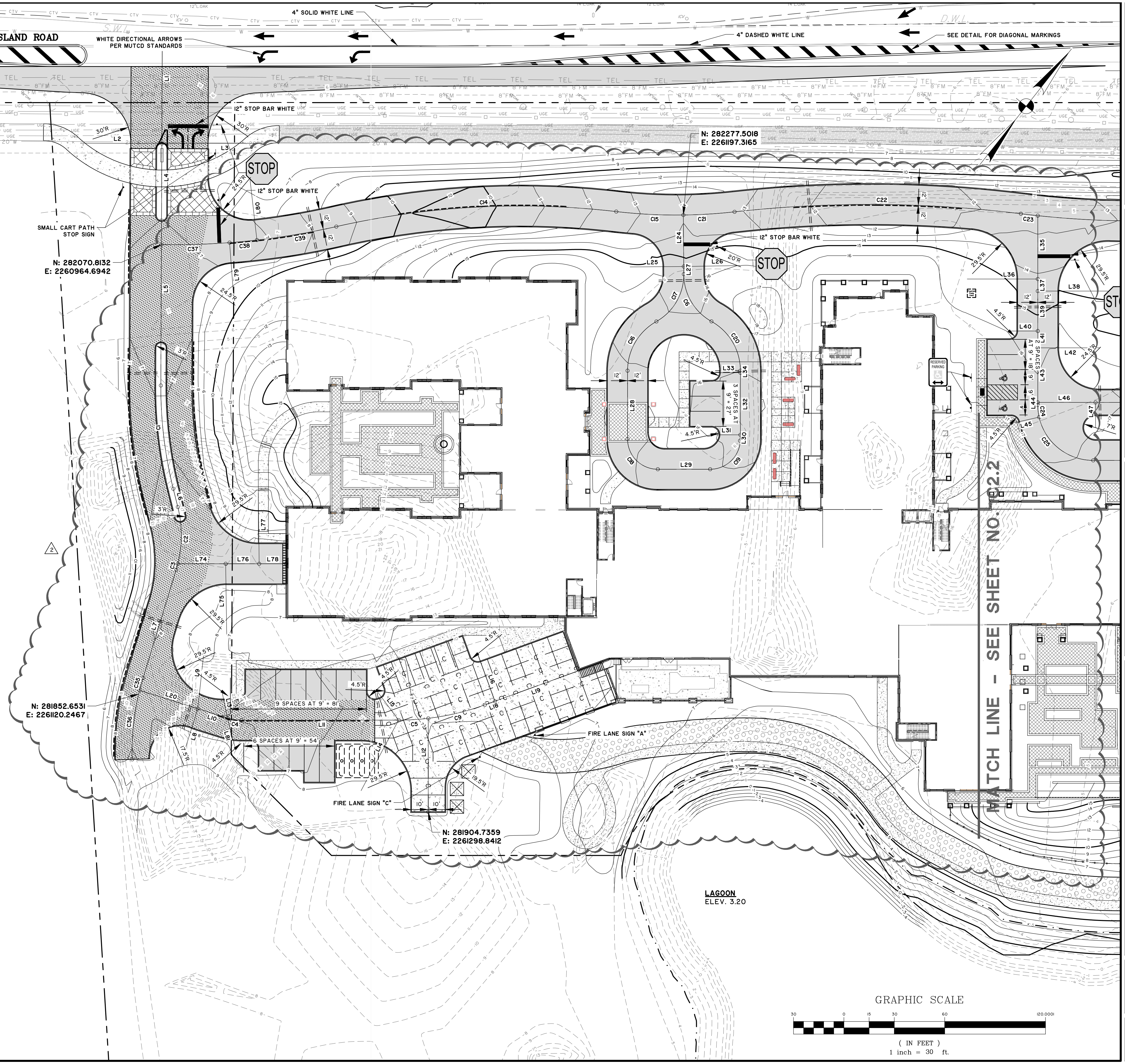
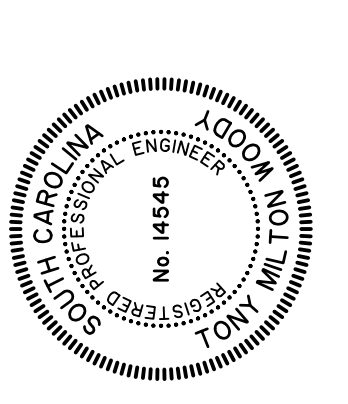
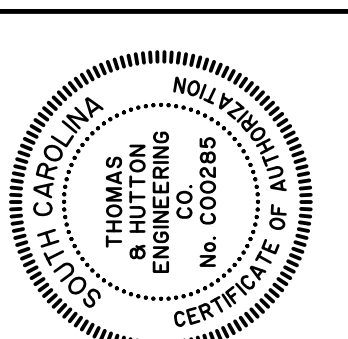


LINE TABLE			LINE TABLE			LINE TABLE		
LINE	BEARING	DISTANCE	LINE	BEARING	DISTANCE	LINE	BEARING	DISTANCE
L1	S 38°08'02" E	58.18'	L32	N 38°22'40" W	37.00'	L59	N 51°37'20" E	42.00'
L2	N 51°51'58" E	48.50'	L33	N 51°37'20" E	17.00'	L60	N 38°22'40" W	9.06'
L3	S 51°30'37" W	57.50'	L34	N 38°22'40" W	1.17'	L61	S 51°37'20" W	42.00'
L4	S 38°08'02" E	60.18'	L35	S 38°22'40" E	37.72'	L62	N 38°22'40" W	36.24'
L5	S 38°08'02" E	83.88'	L36	N 51°37'20" E	42.00'	L63	S 38°22'40" E	108.51'
L6	S 52°21'49" E	11.19'	L37	S 38°22'40" E	7.17'	L64	N 51°37'20" E	29.00'
L7	N 21°23'27" W	67.39'	L38	S 51°37'20" W	42.00'	L65	S 38°22'40" E	23.95'
L8	S 20°56'48" E	30.26'	L39	S 38°22'40" E	23.79'	L66	N 51°37'20" E	29.48'
L9	S 32°15'57" E	34.28'	L40	N 51°37'20" E	17.00'	L67	S 38°22'40" E	28.15'
L10	S 69°03'12" W	18.46'	L41	S 38°22'40" E	10.00'	L68	N 53°59'44" E	30.00'
L11	S 51°37'20" W	93.53'	L42	S 51°37'20" W	37.00'	L70	N 5°45'49" E	18.05'
L12	N 38°23'26" W	55.61'	L43	S 38°22'40" E	32.50'	L71	S 1°33'35" E	20.45'
L13	S 49°55'47" E	16.13'	L44	S 38°22'40" E	1.50'	L72	S 86°01'31" E	5.23'
L14	N 10°21'50" W	47.57'	L45	N 38°54'47" E	17.00'	L74	N 51°37'20" E	28.48'
L15	S 75°05'58" E	21.88'	L46	N 51°37'20" E	34.42'	L75	N 39°12'52" W	42.01'
L16	S 58°22'40" E	30.00'	L47	N 38°22'40" W	15.00'	L76	N 51°37'20" E	19.95'
L18	N 31°37'20" E	6.40'	L48	N 51°37'20" E	55.17'	L77	S 39°03'47" E	42.00'
L19	S 31°37'20" W	67.67'	L49	N 38°22'40" W	15.00'	L78	N 51°37'20" E	16.01'
L20	N 69°03'12" E	36.27'	L50	N 51°37'20" E	34.42'	L79	N 42°41'39" W	37.00'
L24	S 38°50'08" E	30.65'	L51	N 51°37'20" E	58.00'	L80	S 44°50'31" E	37.00'
L25	N 51°09'52" E	31.99'	L52	S 64°19'52" W	17.00'	L81	N 53°00'56" W	18.75'
L26	S 50°40'10" W	32.01'	L53	N 38°22'40" W	1.50'			
L27	S 38°50'08" E	4.57'	L54	N 38°22'40" W	32.50'			
L28	S 38°22'40" E	40.68'	L55	N 51°37'20" E	37.00'			
L29	N 51°37'20" E	31.18'	L56	N 38°22'40" W	10.00'			
L30	N 34°39'41" W	3.52'	L57	S 51°37'20" W	17.00'			
L31	N 51°37'20" E	17.23'	L58	N 38°22'40" W	23.96'			

CURVE TABLE					
CURVE	RADIUS	LENGTH	CHORD	CHD BEARING	DELTA
C1	250.00'	62.09'	61.93'	S 45°14'56" E	14°13'47"
C2	70.00'	34.13'	33.79'	N 38°23'48" W	27°56'02"
C3	70.00'	3.71'	3.71'	N 22°54'37" W	3°02'21"
C4	28.00'	8.52'	8.49'	N 60°20'16" E	17°25'53"
C5	150.00'	17.69'	17.68'	N 48°14'39" E	6°45'21"
C6	32.00'	33.75'	32.21'	S 69°03'05" E	60°25'53"
C9	150.00'	34.67'	34.60'	N 38°14'39" E	13°14'39"
C14	495.82'	167.68'	166.89'	S 48°32'48" W	19°22'38"
C15	312.21'	40.04'	40.01'	N 54°33'41" E	7°20'51"
C16	33.59'	35.59'	33.95'	S 08°01'31" E	60°42'19"
C17	32.00'	34.16'	32.56'	N 08°15'15" W	61°09'47"
C18	18.00'	28.27'	25.46'	S 83°22'40" E	90°00'00"
C19	18.00'	28.27'	25.46'	N 06°37'20" E	90°00'00"
C20	33.59'	35.69'	34.04'	N 68°49'21" W	60°53'21"
C21	312.21'	30.55'	30.54'	N 48°05'04" E	5°36'23"
C22	728.52'	170.83'	170.44'	S 51°59'56" W	13°26'06"
C23	562.00'	10.11'	10.11'	N 58°12'03" E	1°01'52"
C24	33.00'	7.32'	7.30'	S 44°43'57" E	12°42'33"
C25	33.00'	44.52'	41.22'	S 89°43'57" E	77°17'27"
C26	33.00'	44.52'	41.22'	N 12°58'36" E	77°17'27"
C27	33.00'	7.32'	7.30'	N 32°01'24" W	12°42'33"
C28	562.00'	124.25'	124.00'	N 51°21'05" E	12°40'04"
C29	562.00'	79.33'	79.26'	N 40°58'26" E	8°05'15"
C30	92.00'	168.10'	145.68'	S 89°16'34" W	104°41'31"
C31	99.94'	4.14'	4.14'	N 37°11'27" W	2°22'30"
C32	100.06'	17.09'	17.07'	N 31°06'27" W	9°47'19"
C33	90.00'	91.15'	87.30'	S 55°13'24" E	58°01'34"
C34	90.00'	2.81'	2.81'	S 85°07'51" E	1°47'20"
C35	149.64'	7.63'	7.63'	S 22°50'53" E	2°55'19"
C36	150.00'	41.44'	41.31'	S 32°13'12" E	15°49'42"
C37	435.99'	40.60'	40.58'	N 49°58'24" E	5°20'05"
C38	435.99'	16.34'	16.34'	N 46°13'55" E	2°08'52"
C39	435.99'	47.94'	47.92'	N 42°00'29" E	6°18'01"



LINE TABLE			LINE TABLE			LINE TABLE		
LINE	BEARING	DISTANCE	LINE	BEARING	DISTANCE	LINE	BEARING	DISTANCE
L1	S 38°08'02" E	58.18'	L32	N 38°22'40" W	37.00'	L59	N 51°37'20" E	42.00'
L2	N 51°51'58" E	48.50'	L33	N 51°37'20" E	17.00'	L60	N 38°22'40" W	9.06'
L3	S 51°30'37" W	57.50'	L34	N 38°22'40" W	1.17'	L61	S 51°37'20" W	42.00'
L4	S 38°08'02" E	60.18'	L35	S 38°22'40" E	37.72'	L62	N 38°22'40" W	36.24'
L5	S 38°08'02" E	83.88'	L36	N 51°37'20" E	42.00'	L63	S 38°22'40" E	108.51'
L6	S 52°21'49" E	11.19'	L37	S 38°22'40" E	7.17'	L64	N 51°37'20" E	29.00'
L7	N 21°23'27" W	67.39'	L38	S 51°37'20" W	42.00'	L65	S 38°22'40" E	23.95'
L8	S 20°56'48" E	30.26'	L39	S 38°22'40" E	23.79'	L66	N 51°37'20" E	29.48'
L9	S 32°15'57" E	34.28'	L40	N 51°37'20" E	17.00'	L67	S 38°22'40" E	28.15'
L10	S 69°03'12" W	18.46'	L41	S 38°22'40" E	10.00'	L68	N 53°59'44" E	30.00'
L11	S 51°37'20" W	93.53'	L42	S 51°37'20" W	37.00'	L70	N 5°45'49" E	18.05'
L12	N 38°23'26" W	55.61'	L43	S 38°22'40" E	32.50'	L71	S 1°33'35" E	20.45'
L13	S 49°55'47" E	16.13'	L44	S 38°22'40" E	1.50'	L72	S 86°01'31" E	5.23'
L14	N 10°21'50" W	47.57'	L45	N 38°54'47" E	17.00'	L74	N 51°37'20" E	28.48'
L15	S 75°05'58" E	21.88'	L46	N 51°37'20" E	34.42'	L75	N 39°12'52" W	42.01'
L16	S 58°22'40" E	30.00'	L47	N 38°22'40" W	15.00'	L76	N 51°37'20" E	19.95'
L18	N 31°37'20" E	6.40'	L48	N 51°37'20" E	55.17'	L77	S 39°03'47" E	42.00'
L19	S 31°37'20" W	67.67'	L49	N 38°22'40" W	15.00'	L78	N 51°37'20" E	16.01'
L20	N 69°03'12" E	36.27'	L50	N 51°37'20" E	34.42'	L79	N 42°41'39" W	37.00'
L24	S 38°50'08" E	30.65'	L51	N 51°37'20" E	58.00'	L80	S 44°50'31" E	37.00'
L25	N 51°09'52" E	31.99'	L52	S 64°19'52" W	17.00'	L81	N 53°00'56" W	18.75'
L26	S 50°40'10" W	32.01'	L53	N 38°22'40" W	1.50'			
L27	S 38°50'08" E	4.57'	L54	N 38°22'40" W	32.50'			
L28	S 38°22'40" E	40.68'	L55	N 51°37'20" E	37.00'			
L29	N 51°37'20" E	31.18'	L56	N 38°22'40" W	10.00'			
L30	N 34°39'41" W	3.52'	L57	S 51°37'20" W	17.00'			
L31	N 51°37'20" E	17.23'	L58	N 38°22'40" W	23.96'			



NO.	REVISIONS	DATE	BY
2	REVISE LAYOUT	3/22/18	WEF
1	REVISE LAYOUT	10/15/17	WEF

THOMAS & HUTTON
 682 J. J. Dadds Boulevard • Suite 100
 Mt. Pleasant, SC 29564 • 843.849.0200
 www.thomasandhutton.com

KIAWAH LIFE PLAN VILLAGE, INC.
 CHARLESTON COUNTY, SOUTH CAROLINA
KIAWAH LIFE PLAN VILLAGE
STAKING AND SIGNAGE PLAN

JOB NO:	J-27151.0000
DATE:	7/17/18
DRAWN:	BRW
DESIGNED:	WEF
REVIEWED:	WEF
APPROVED:	TMW
SCALE:	1" = 30'

C2.1

